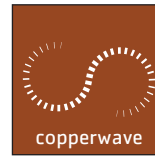
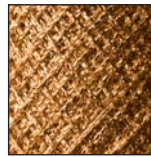


# COPPER



250 MHz cat. 6

## UTP 6

According to



## DX31\*\*-\*

- > IEC 61156
- > EN 50288-6
- > IEC 11801 2<sup>nd</sup> Ed.
- > EN 50173 2<sup>nd</sup> Ed.
- > EIA/TIA 568 B.2.1

1<sup>st</sup> ISSUE 2006

ARCHITECTS OF LIGHT

# COPPER

250 MHz cat. 6

## UTP 6

As a global manufacturer of telecom products, Prysmian offers the market an integrated set of components, systems, engineering and installations for turn-key projects in the field of Premises, leading the transition from Copper to Fibre Optic.



### Applications

This Hi-Performance Unfoiled Twisted Pair cable is designed to fulfill and exceed the CAT.6 requirements of the most common Cable Standards - IEC 61156 - EN 50288-6 - as well as the CLASS E described by the Structured Cabling International Standards - IEC 11801 2<sup>nd</sup> Ed.- EN 50173 2<sup>nd</sup> Ed. - EIA/TIA 568.B.2.1. Suitable for transmission of digital and analogue voice, data and video signals, this design supports ISDN, Ethernet 10 Base-T, Fast Ethernet 100 Base-T, Gigabit Ethernet 1000 Base-T, Token Ring 4/16 Mbit/s, TP-PMD/TP-DDI 125 Mbit/s, ATM 155 Mbit/s. Afumex<sup>®</sup>, the special LSOH Prysmian compound, is attractive where the generation of smoke or toxic emissions is potentially hazardous to people or equipment.

Flame  
retardant



IEC 60332-1  
EN 50265

Fire  
retardant



IEC 60332-3  
EN 50266

HCL



IEC 60754-2  
EN 50267  
Afumex<sup>®</sup> only

Smokes



low  
IEC 61034  
EN 50268  
Afumex<sup>®</sup> only

EMC



Bending



op:  $\geq 30$  mm  
inst:  $\geq 60$  mm

Temperature



op:  $-20$  °C/ $+70$  °C  
inst:  $0$  °C/ $+50$  °C  
sto:  $-40$  °C/ $+70$  °C

Tensile



$\leq 110$  N

DX31



## CONSTRUCTION (NOMINAL VALUES)

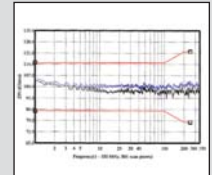
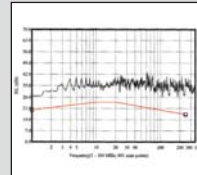
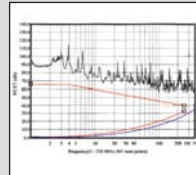
cat. 6

<b>Conductor</b>	annealed copper wire		AWG	24
<b>Insulation</b>	solid polyethylene	diameter	mm	0,98
<b>Outer sheath</b>	PVC or Afumex®	single	diameter	5,9
		siamese	outer dim	5,9x11,9
<b>Weight</b>	single		kg/km	38
	siamese		kg/km	77

## ELECTRICAL CHARACTERISTICS AT 20 °C (TYPICAL VALUES)

## GRAPH

<b>Operating Voltage</b>	≤	125 Vdc
<b>DC Loop Resistance</b>	≤	170 Ω/km
<b>Capacitance Unbalance</b>	≤	1600 pF/km
<b>Input Impedance</b>		100±15 Ω
<b>NVP @ 100 MHz</b>		0,68 c. nominal
<b>Skew @ 100 MHz</b>	≤	15 ns/100 m
<b>LCL</b>	≥	40 dB
<b>RL headroom</b>	>	7 dB
<b>NEXT headroom</b>	>	9 dB
<b>PS-NEXT headroom</b>	>	8 dB
<b>ACR @ 250MHz</b>	>	18 dB
<b>PS-ELFEXT headroom</b>	>	6 dB



## ORDERING CODE

cable	code	sheath	std colour	length	packaging	marking
UTP 4P	DX3105-3	Afumex® LSZH	Green RAL 6018	m 305	box	PRYSMIAN DX3105 - UTP 4x2x24AWG LSZH - CAT. 6 350 MHz ISO/IEC
UTP 4P	DX3105-5	Afumex® LSZH	Green RAL 6018	m 500	drum	11801 - EN 50173 - EIA/TIA 568.B.2.1 - SGS CERTIFIED YWWY metric m
UTP 4P	DX3105-1	Afumex® LSZH	Green RAL 6018	m 1000	drum	
UTP 4P	DX3100-3	PVC	Grey RAL 7001	m 305	box	PRYSMIAN DX3100 - UTP 4x2x24AWG - CAT. 6 350 MHz ISO/IEC
UTP 4P	DX3100-5	PVC	Grey RAL 7001	m 500	drum	11801 - EN 50173 - EIA/TIA 568.B.2.1 - SGS CERTIFIED YWWY metric m
UTP 4P	DX3100-1	PVC	Grey RAL 7001	m 1000	drum	
UTP 2x4P	DX3125-5	Afumex® LSZH	Green RAL 6018	m 500	drum	PRYSMIAN DX3125 - UTP 2x(4x2x24AWG) LSZH - CAT. 6 350 MHz ISO/IEC
UTP 2x4P	DX3125-1	Afumex® LSZH	Green RAL 6018	m 1000	drum	11801 - EN 50173 - EIA/TIA 568.B.2.1 - SGS CERTIFIED YWWY metric m
UTP 2x4P	DX3120-5	PVC	Grey RAL 7001	m 500	drum	PRYSMIAN DX3120 - UTP 2x(4x2x24AWG) - CAT. 6 350 MHz ISO/IEC
UTP 2x4P	DX3120-1	PVC	Grey RAL 7001	m 1000	drum	11801 - EN 50173 - EIA/TIA 568.B.2.1 - SGS CERTIFIED YWWY metric m

## About Us

Prysmian is a global market leader in optical cables, supplying a major part of the world's optical cable needs. With a strong heritage of highly advanced R&D, Prysmian is at the leading edge of the technology.

With a worldwide manufacturing presence in 12 countries and in 4 continents Prysmian's global experience and local manufacturing capacity is a significant force in the international marketplace, assuring continuity of supply and high level of service.

Prysmian's optical technology encompasses optical fibers, cables, connectivity, projects and services ensuring that not only the right cable but the right total optical communication system is matched to our customers' needs.

Prysmian offers a complete service from design planning, manufacture and installation through to technical support of commissioned cable networks. Planning and surveying are the cornerstone of our operation, with quality maintained through the expertise and dedication of all our staff working across the business to ISO 9001 and 14000 standards.

When a project is in Prysmian's hands, our customers can depend on a total quality service.

Specifications are subject to change without notice. Cable are designed and tested according to the main national and international specifications (IEC specifications).

dega design group